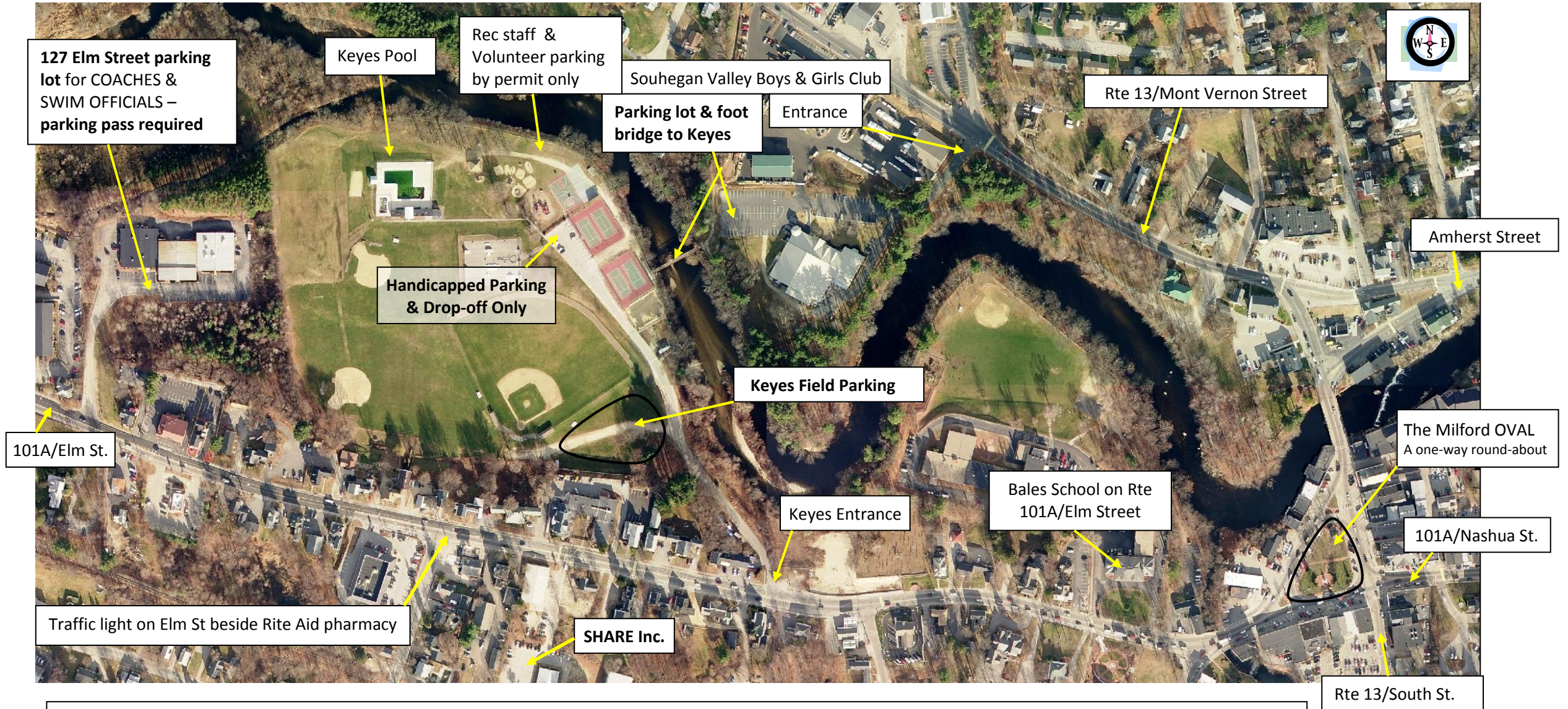


Parking and Location Map for the Milford State Swim Meet (August 4, 2012) at Keyes Memorial Park 45 Elm St Milford NH



Please remember that we are being allowed to use *private property* for parking and the owners will be conducting their regular business on Sat.

Keyes Field Parking (south of ball diamond) – Main parking area for the swim event. Handicapped spaces available by the tennis courts.

127 Elm Parking – Reserved for Coaches and Officials; must have a **parking pass** displayed in windshield; the driveway into and around the building and the emergency entrance to Keyes **MUST** be kept open so *no parking in these areas*. We need to leave two spaces open at the doorway to Units A-1 and A-2.

B&G Club Parking – Please park towards the back of the lot, closest to the footbridge, especially on Sunday as we will be sharing parking with Sunday church services.

SHARE Inc. Parking – Back-up parking lot if the other 3 lots fill-up; located on the south side of Elm St. behind Federated Auto Parts; sign reads SHARE Center.